

Sheet 1 Location and Vicinity Map

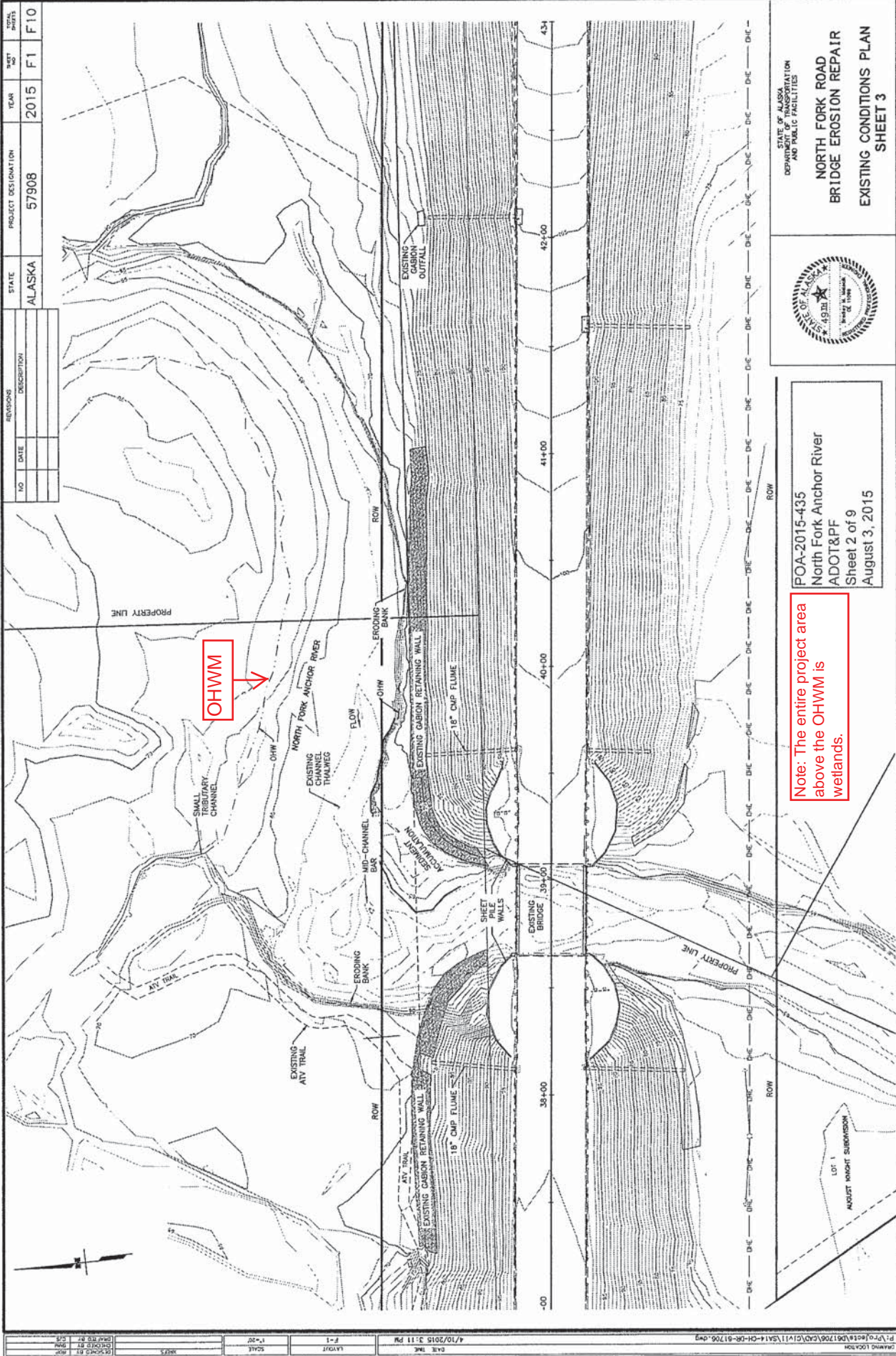
POA-2015-435
 North Fork Anchor River
 ADOT&PF
 Sheet 1 of 9
 August 3, 2015

STATE	PROJECT DESIGNATION	YEAR	SHEET NO.	TOTAL SHEETS
ALASKA	57908	2015	F1	F10

NO.	DATE	DESCRIPTION

DATE TIME	4/7/2015 3:11 PM
LAYOUT	F-1
SCALE	1"=20'
SHEET	
DESIGNED BY	
CHECKED BY	
DATE	

P:\Projects\57908\57908\CD\511\5114-DH-08-01-706.dwg
 8/3/2015 10:58:57 AM
 8/3/2015 10:58:57 AM
 8/3/2015 10:58:57 AM



Note: The entire project area above the OHWM is wetlands.

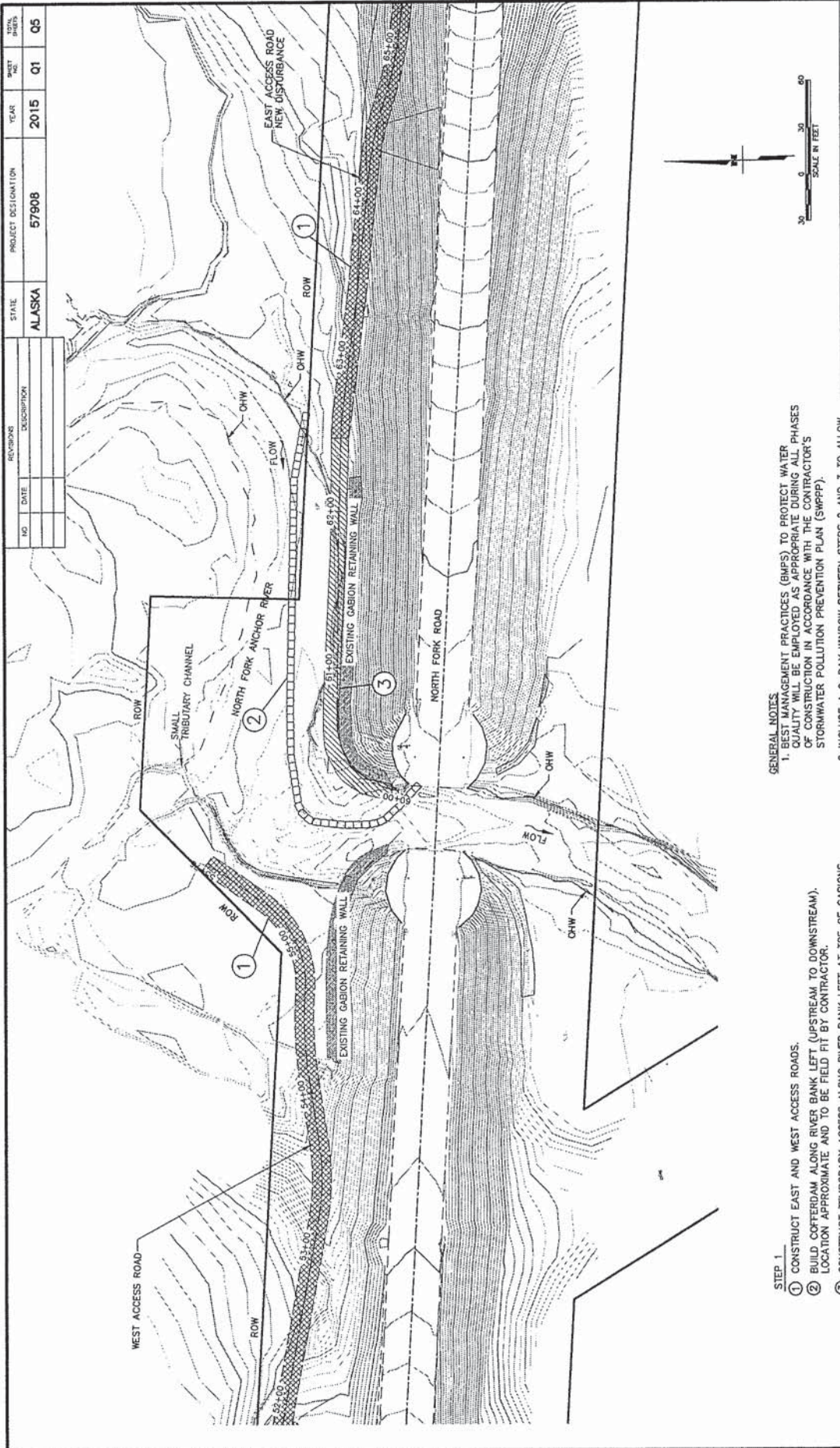
POA-2015-435
 North Fork Anchor River
 ADOT&PF
 Sheet 2 of 9
 August 3, 2015



STATE OF ALASKA
 DEPARTMENT OF TRANSPORTATION
 AND PUBLIC FACILITIES
**NORTH FORK ROAD
 BRIDGE EROSION REPAIR
 EXISTING CONDITIONS PLAN
 SHEET 3**

NO.	DATE	REVISIONS DESCRIPTION	STATE	PROJECT DESIGNATION	YEAR	SHEET NO.	TOTAL SHEETS
			ALASKA	57908	2015	Q1	Q5

DATE TIME	4/7/2015 3:58 PM
LAYOUT	Q1
SCALE	1"=30'
DRAWN BY	MS
CHECKED BY	MS
DATE	4/7/15
PROJECT	57908





GENERAL NOTES:

- BEST MANAGEMENT PRACTICES (BMPs) TO PROTECT WATER QUALITY WILL BE EMPLOYED AS APPROPRIATE DURING ALL PHASES OF CONSTRUCTION IN ACCORDANCE WITH THE CONTRACTOR'S STORMWATER POLLUTION PREVENTION PLAN (SWPPP).
- INCLUDE A 2-DAY WINDOW BETWEEN STEPS 2 AND 3 TO ALLOW FOR JUVENILE FISH PASSAGE PER ADF&G.

STEP 1

- CONSTRUCT EAST AND WEST ACCESS ROADS.
- BUILD COFFERDAM ALONG RIVER BANK LEFT (UPSTREAM TO DOWNSTREAM). LOCATION APPROXIMATE AND TO BE FIELD FIT BY CONTRACTOR.
- CONSTRUCT TEMPORARY ACCESS ALONG RIVER BANK LEFT AT TOE OF GABIONS.



 SCALE IN FEET

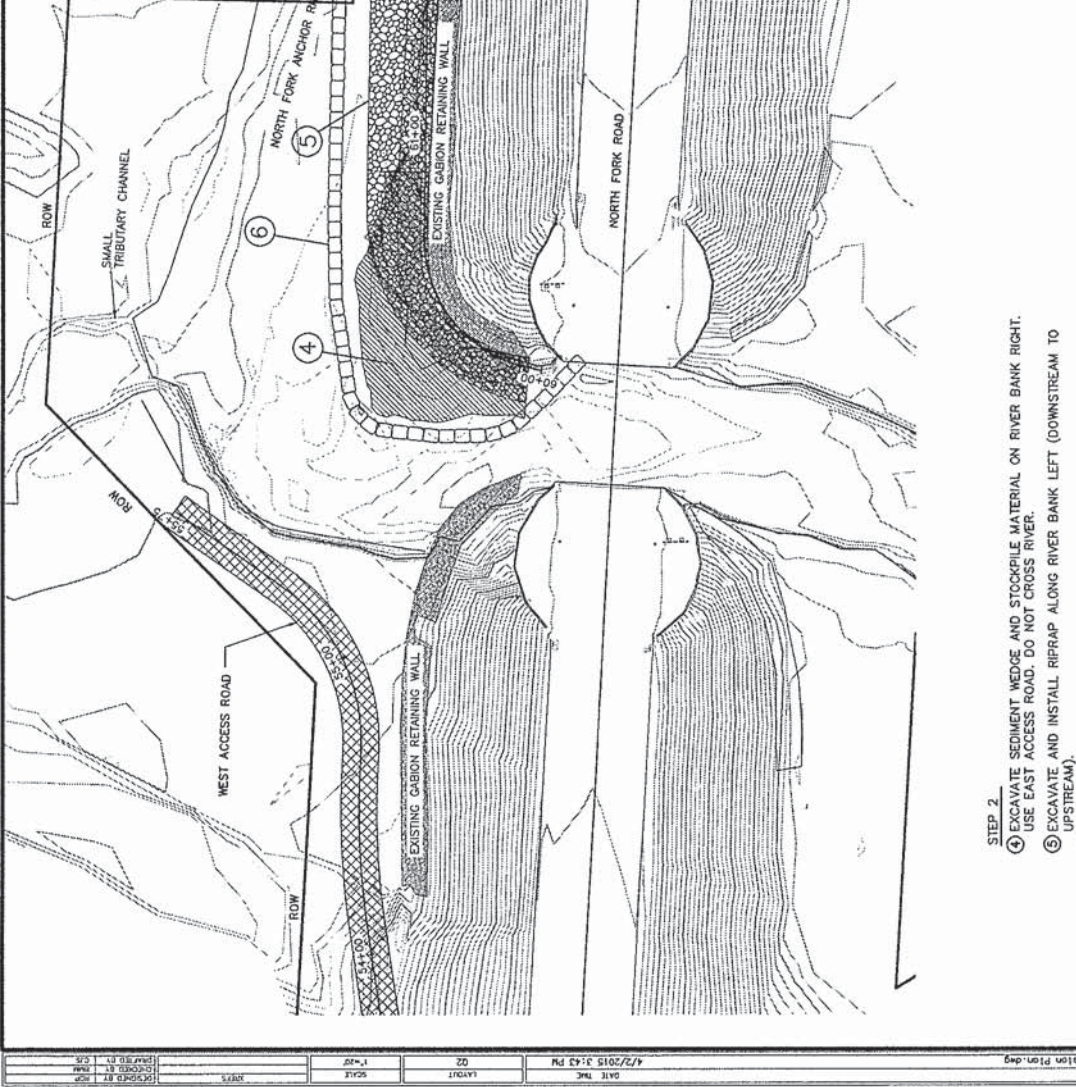
STATE OF ALASKA
 DEPARTMENT OF TRANSPORTATION
 AND PUBLIC FACILITIES

**NORTH FORK ROAD
 BRIDGE EROSION REPAIR**
 DIVERSION PLAN
 SHEET 4

POA-2015-435
 North Fork Anchor River
 ADOT&PF
 Sheet 3 of 9
 August 3, 2015

NO.	DATE	REVISIONS DESCRIPTION

STATE	PROJECT DESIGNATION	YEAR	SHEET NO.	TOTAL SHEETS
ALASKA	57908	2015	Q2	Q5

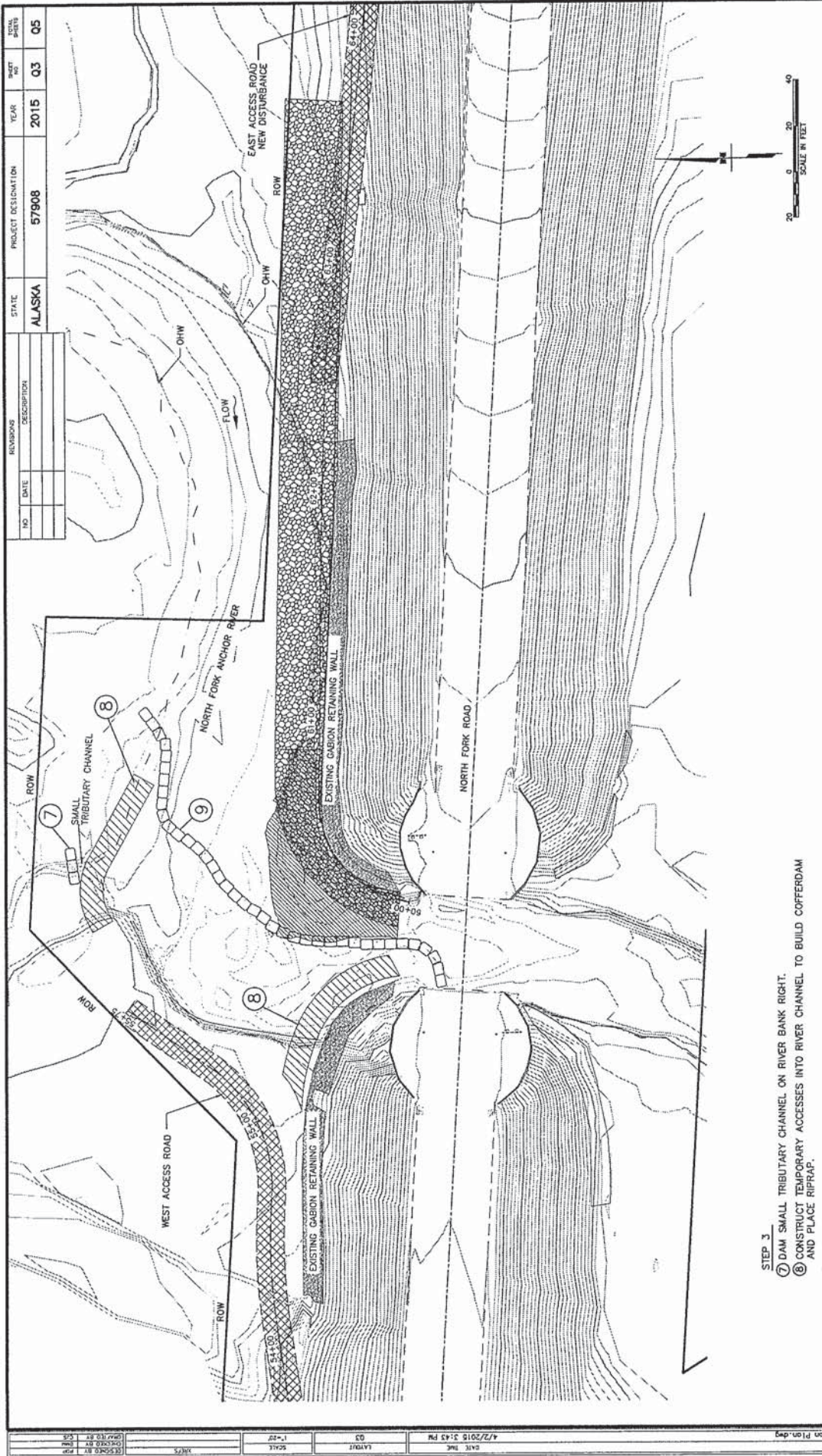


- STEP 2
- ④ EXCAVATE SEDIMENT WEDGE AND STOCKPILE MATERIAL ON RIVER BANK RIGHT. USE EAST ACCESS ROAD. DO NOT CROSS RIVER.
 - ⑤ EXCAVATE AND INSTALL RIPRAP ALONG RIVER BANK LEFT (DOWNSTREAM TO UPSTREAM).
 - ⑥ REMOVE COFFERDAM (DOWNSTREAM TO UPSTREAM) AFTER IMPROVEMENTS ARE CONSTRUCTED.

POA-2015-435
 North Fork Anchor River
 ADOT&PF
 Sheet 4 of 9
 August 3, 2015



STATE OF ALASKA
 DEPARTMENT OF TRANSPORTATION
 AND PUBLIC FACILITIES
 NORTH FORK ROAD
 BRIDGE EROSION REPAIR
 DIVERSION PLAN
 SHEET 5



- STEP 3**
- ⑦ DAM SMALL TRIBUTARY CHANNEL ON RIVER BANK RIGHT.
 - ⑧ CONSTRUCT TEMPORARY ACCESSES INTO RIVER CHANNEL TO BUILD COFFERDAM AND PLACE RIPRAP.
 - ⑨ BUILD COFFERDAM ALONG RIVER BANK RIGHT (UPSTREAM TO DOWNSTREAM). LOCATION APPROXIMATE AND TO BE FIELD FIT BY CONTRACTOR.

NO.	DATE	REVISIONS DESCRIPTION

STATE	ALASKA
PROJECT DESIGNATION	57908
YEAR	2015
SHEET NO.	03
TOTAL SHEETS	05

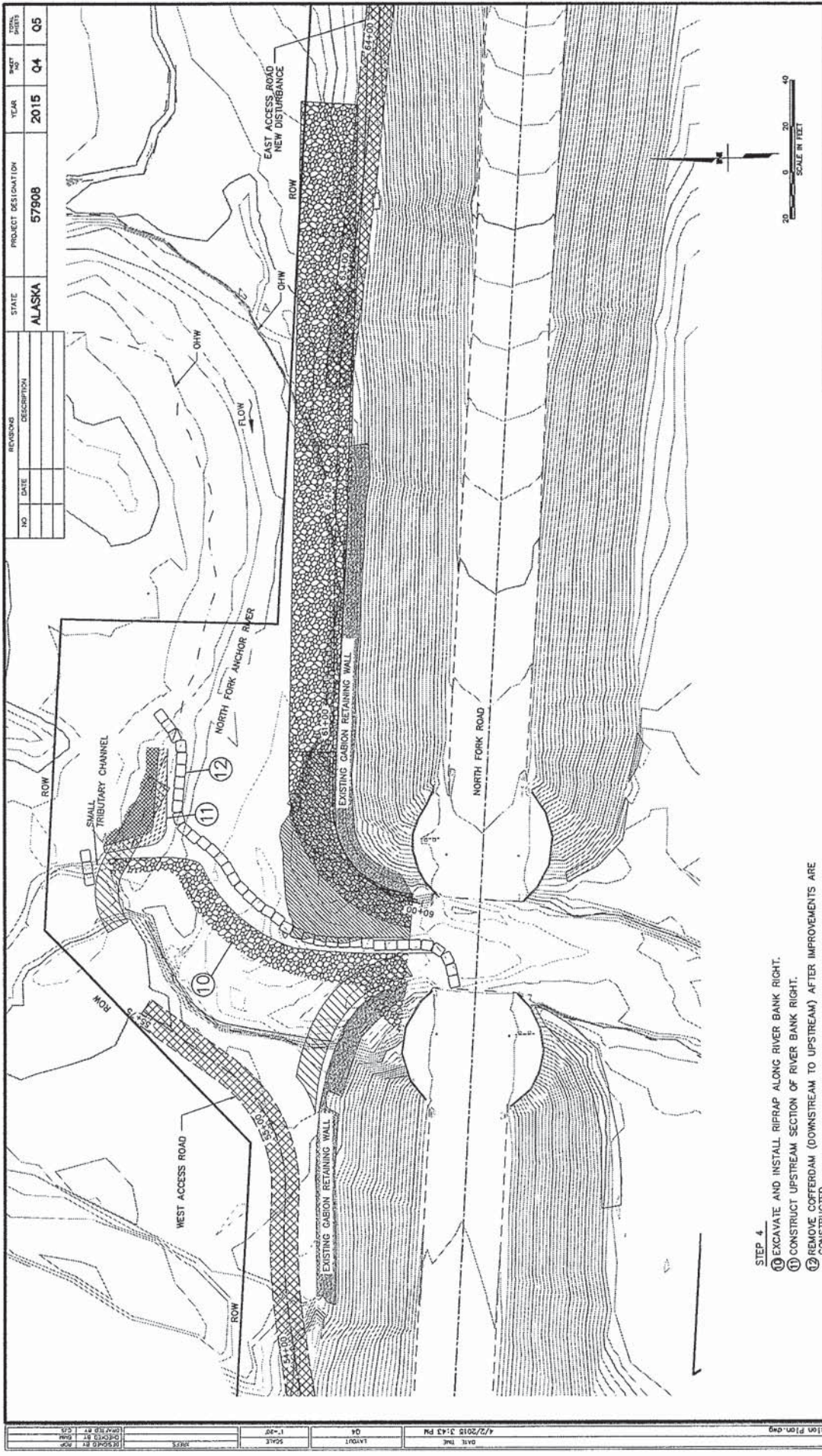
STATE OF ALASKA
DEPARTMENT OF HIGHWAYS
AND PUBLIC FACILITIES

**NORTH FORK ROAD
BRIDGE EROSION REPAIR**

DIVERSION PLAN
SHEET 6



POA-2015-435
North Fork Anchor River
ADOT&PF
Sheet 5 of 9
August 3, 2015



- STEP 4**
- ⑩ EXCAVATE AND INSTALL RIPRAP ALONG RIVER BANK RIGHT.
 - ⑪ CONSTRUCT UPSTREAM SECTION OF RIVER BANK RIGHT.
 - ⑫ REMOVE COFFERDAM (DOWNSTREAM TO UPSTREAM) AFTER IMPROVEMENTS ARE CONSTRUCTED.

NO.	DATE	REVISIONS	DESCRIPTION

STATE	PROJECT DESIGNATION	YEAR	SHEET NO.
ALASKA	57908	2015	04
TOTAL SHEETS			05

STATE OF ALASKA
DEPARTMENT OF TRANSPORTATION
AND PUBLIC FACILITIES

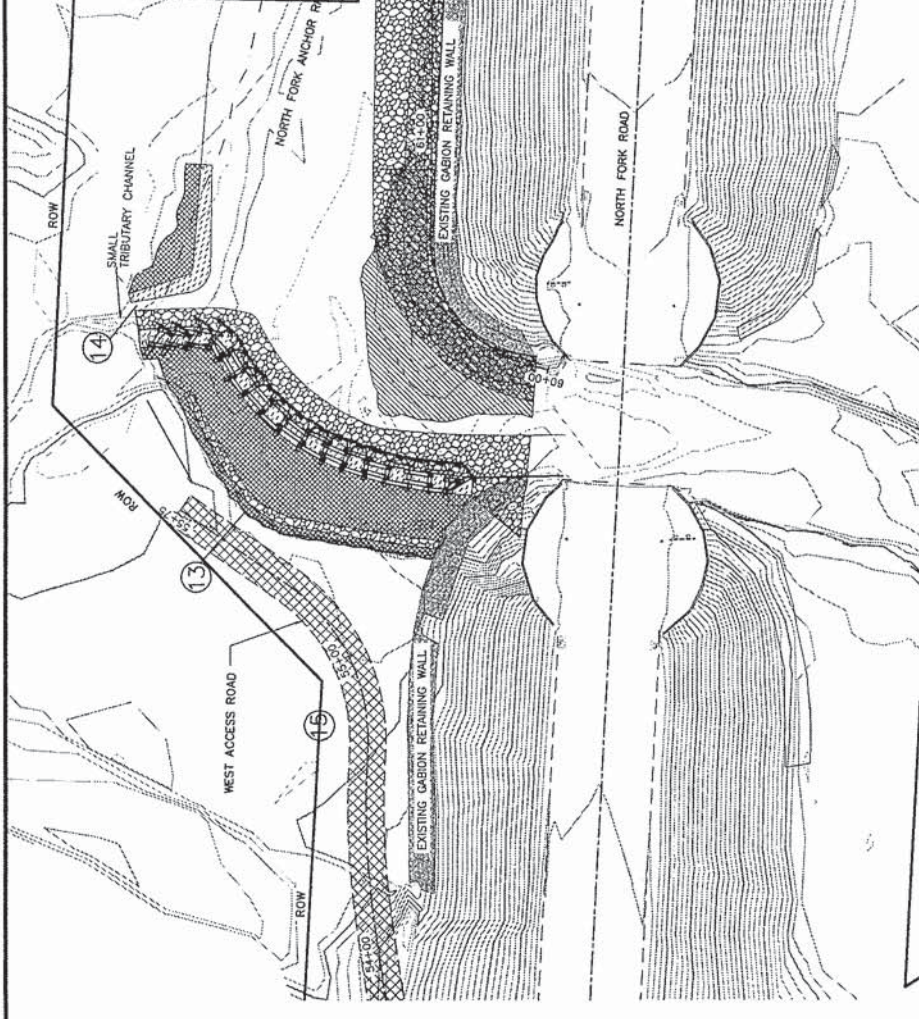
**NORTH FORK ROAD
BRIDGE EROSION REPAIR**

DIVERSION PLAN
SHEET 7

POA-2015-435
North Fork Anchor River
ADOT&PF
Sheet 6 of 9
August 3, 2015

NO.	DATE	REVISIONS	DESCRIPTION

STATE	ALASKA
PROJECT DESIGNATION	57908
YEAR	2015
SHEET NO.	05
TOTAL SHEETS	05



- STEP 5
- 13 FINISH CONSTRUCTING RIVER BANK RIGHT, REMOVE TEMPORARY ACCESSES AS CONSTRUCTION PROCEEDS.
 - 14 REMOVE DAM IN TRIBUTARY CHANNEL.
 - 15 TOPSOIL AND SEED DISTURBED AREAS.

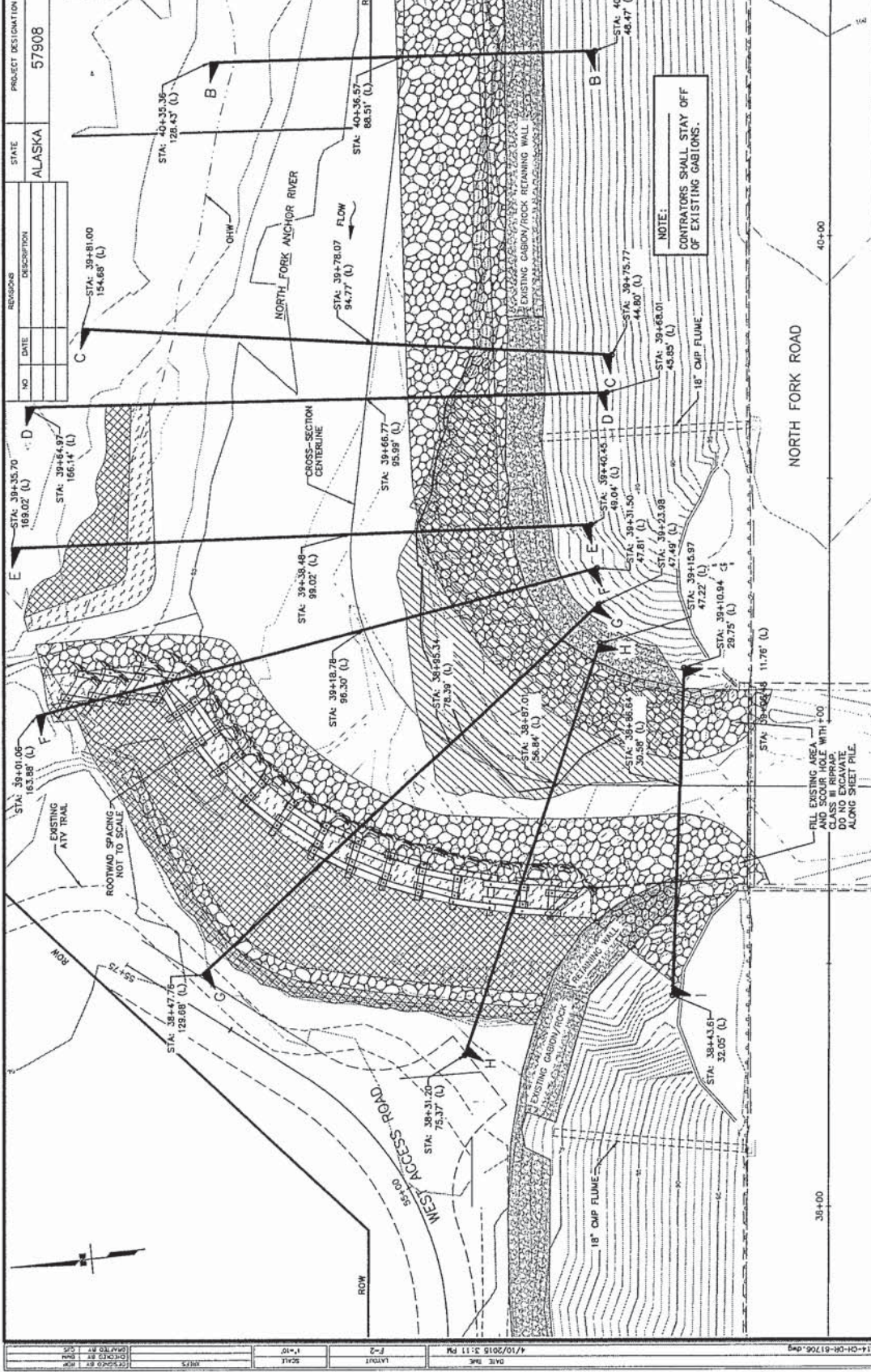


POA-2015-435
 North Fork Anchor River
 ADOT&PF
 Sheet 7 of 9
 August 3, 2015

STATE OF ALASKA
 DEPARTMENT OF TRANSPORTATION
 AND PUBLIC FACILITIES
 NORTH FORK ROAD
 BRIDGE EROSION REPAIR
 DIVERSION PLAN
 SHEET 8

NO.	DATE	DESCRIPTION	STATE	PROJECT DESIGNATION	YEAR	SHEET NO.	TOTAL SHEETS
			ALASKA	57908	2015	F2	F10

NOTE:
STATIONS AND OFFSETS
BASED ON NORTH FORK
ROAD CENTERLINE



NOTE:
CONTRACTORS SHALL STAY OFF
OF EXISTING GABIONS.

STATE OF ALASKA
DEPARTMENT OF TRANSPORTATION
AND PUBLIC FACILITIES

NORTH FORK ROAD
BRIDGE EROSION REPAIR
SECTIONS
PROPOSED PLAN
SHEET 9

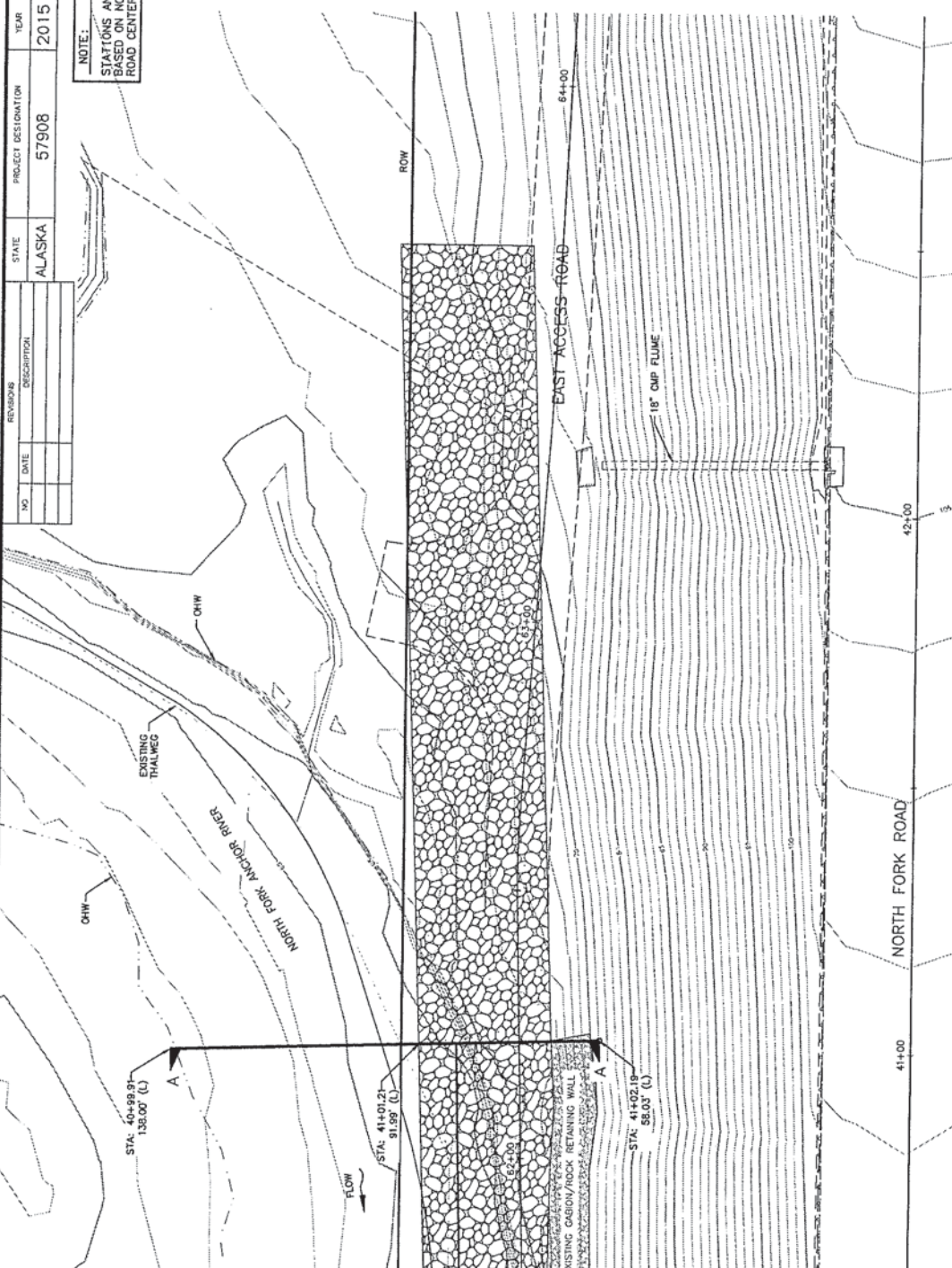
POA-2015-435
North Fork Anchor River
ADOT&PF
Sheet 8 of 9
August 3, 2015

DATE PLOT	4/10/2015 3:11 PM
LAYOUT	F-2
SCALE	1"=10'
DESIGNED BY	WRS
CHECKED BY	
DATE	
PROJECT	
NO.	

NO.	DATE	REVISIONS	DESCRIPTION

STATE	PROJECT DESIGNATION	YEAR	SHEET NO.	TOTAL SHEETS
ALASKA	57908	2015	F3	F10

NOTE:
STATIONS AND OFFSETS
BASED ON NORTH FORK
ROAD CENTERLINE



STATE OF ALASKA
DEPARTMENT OF TRANSPORTATION
AND PUBLIC FACILITIES
**NORTH FORK ROAD
BRIDGE EROSION REPAIR**
PROPOSED PLAN
SHEET 10

POA-2015-435
North Fork Anchor River
ADOT&PF
Sheet 9 of 9
August 3, 2015

